

SUSTAINABLE DRILL MUD DISPOSAL

1300 001 306
www.redirectrecycling.com.au



A Borg company

VERTICALLY INTEGRATED DRILL MUD DISPOSAL SERVICE

reDirect Drill Mud Recycling has been established as an environmentally conscious beneficial reuse solution for liquid waste disposal and offers efficient, and complete recovery management. This initiative creates an industrial ecology which processes the waste, and aims to close the loop on Hydro Excavation and Horizontal Directional drill muds via a sustainable product life cycle.

Dedicated to the collection, treatment, recycling and responsible disposal of liquid waste, including the provision of on-site waste bins, reDirect Recycling offer environmentally compliant disposal services and strive to recycle 100% of the waste we receive and return it to site as reusable engineered product.

reDirect Recycling operates one of New South Wales largest drill mud recycling facilities, returning treated mud fines and aggregates to be used as engineered fill, sand, and specialist soil and compost products which are sold on for using in the building, landscaping and agricultural industries.

With a commitment to providing customers with liquid waste disposal solutions that minimise both environmental impacts and overall costs, reDirect Recycling has two options for the recovery of drill mud, offering significant cost savings in landfill charges:

ON SITE BIN

A liquid waste or slurry bin is delivered to your premises or project and is collected when full, returning the liquid waste to a reDirect Recycling material recovery facility for processing.

DISPOSAL FACILITIES

Deliver your drill mud waste to one of the reDirect Recycling EPA approved material recovery facilities.

These sites offer 24 hour service, accessibility for vehicles of all sizes and a calibrated weighbridge;

- 48 Industry Road, Vineyard, NSW 2765
- 24 Davis Road, Wetherill Park, NSW 2164 (opening soon)

By reclaiming materials that would otherwise go to landfill, thereby reducing waste and creating materials for beneficial reuse, we protect the environment for future generations.

When you opt for drill mud disposal through reDirect Recycling you are assisting in creating sustainable industrial processes.

For more information contact us on **1300 001 306** or visit www.redirectrecycling.com.au

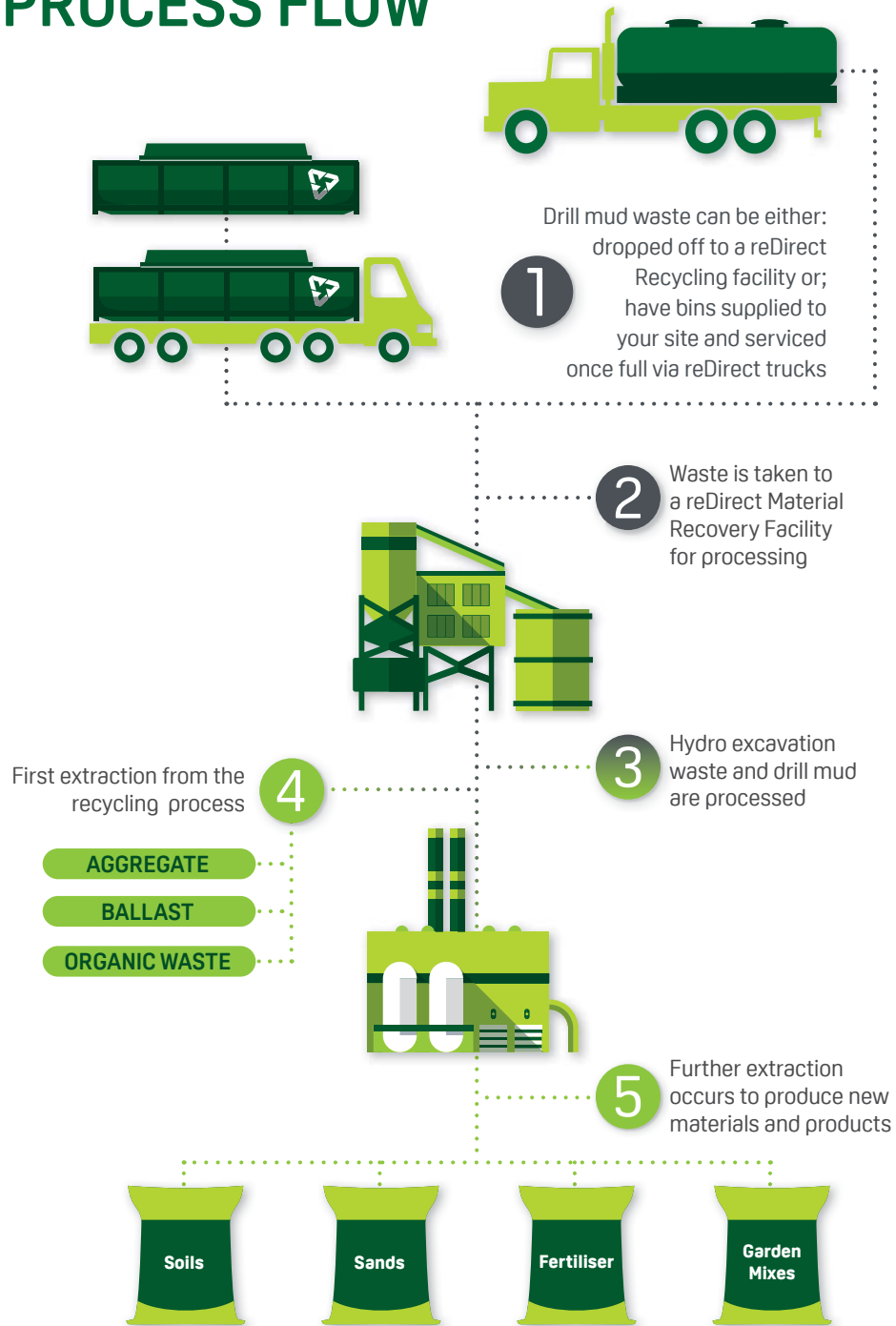




CREATING A COMPLETE & SUSTAINABLE LOOP



Drill Mud PROCESS FLOW



Acceptable Inputs



Drilling mud (naturally occurring rock and soil, sandstone, shale and clay)

Drilling fluid (water, chemical additives such as bentonite, soda ash (sodium carbonate), sodium hydroxide, lime and polymers).

Both must be generated during drilling operations such as horizontal directional drilling or potholing.

Unacceptable Inputs



Drilling mud generated by deep drilling for mineral, gas or coal exploration.

Drilling through contaminated soils, acid sulphate soils (ASS) or potential acid sulphate soils (PASS).